

Solid-State Timer

Solid-State A.C. Timer packs big capability in a small package.

DESCRIPTION

The Solid-State Timer from Graco operates on standard 115/230 VAC 50/60 Hz input power, and provides a total on and off cycle with “on” periods to meet your specific lubrication system’s requirements. Total cycle times can be set from 1/2 minute to 32 hours. “On” time during the total cycle time can be set from 12 seconds to 13 minutes. The “on” time occurs at the beginning of each period.



FEATURES BENEFITS

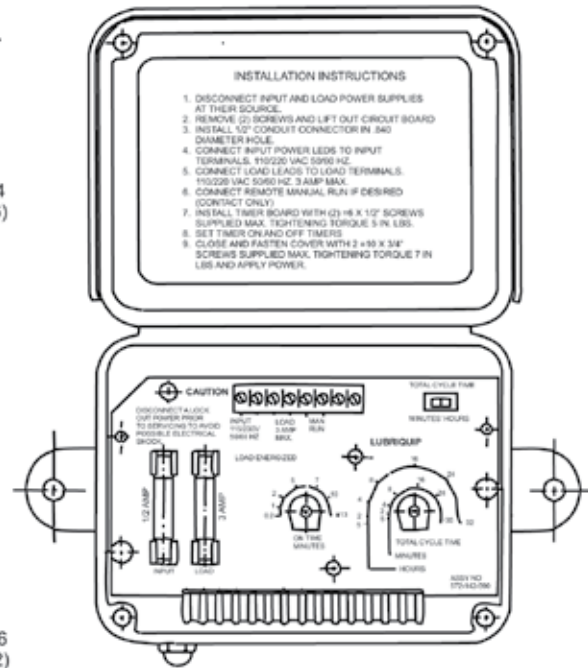
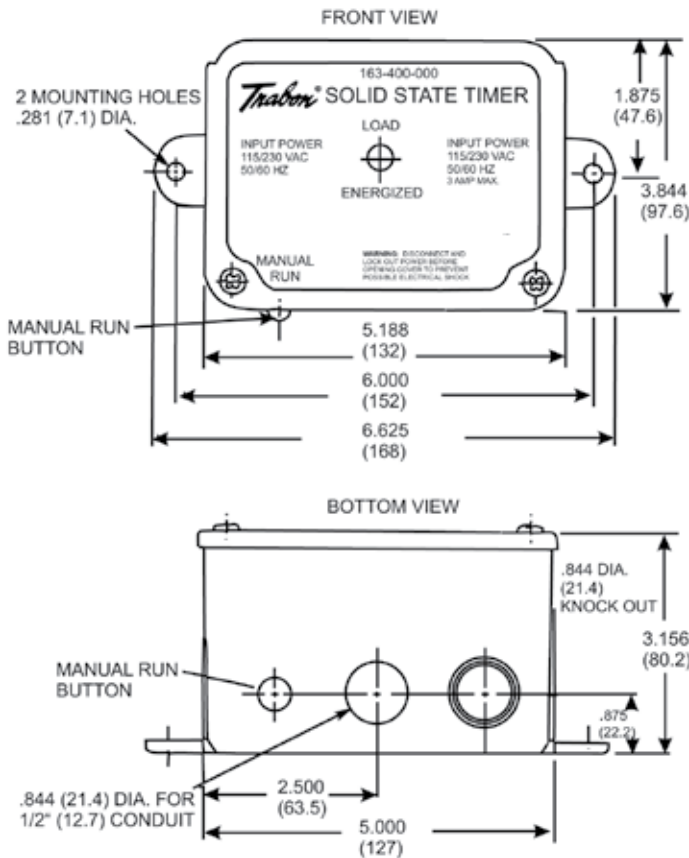
- Solid-state technology combined with multiple-level protection ensures dependable performance. Not only are components solid-state, they are selected and installed solidly into a single unit that’s more resistant to shock and vibration. The timing circuitry board is enclosed in a high-impact plastic case.
- Exceptional flexibility of settings allows this timer to be used with many types of simple or sophisticated lubrication systems.
- Manual run button can be used to check system integrity as well as to simplify system filling and air purging. When depressed and released, it resets the timer to the beginning of a cycle and the system will be “on” (will deliver lubrication for the previously set “on” time. Remote manual run contacts are included. (Jumpering of these contacts will not result in continuous lubrication.)
- Face-mounted LED displays timer status at a glance. LED is “lighted” during “on” time. This aids when troubleshooting the system.
- Tamper-resistant design puts cycle setting controls inside the covered case. Two screws must be removed to open the cover. Setting of total cycle time and “on” time is done with a screwdriver.
- Easy mounting and installation. Mounting of the enclosure requires just two screws and simple electrical connections for input/output
- Built-in memory keeps the timer “alive” for 1-1/2 hours during power failures and machine shutdown. This feature suspends timing when power is interrupted. On restart, the cycle time continues from the point where it was suspended. This eliminates pre-lube when power is reapplied after short machine shutdowns.

SPECIFICATIONS	
Electrical	115/230 VAC, 50/60 Hz, 3 ampere (max)
Temperature Range	
Operating	0°F-131°F (-18°C-55°C)
Storage	-67°F-185°F (-55°C-85°C)
Enclosure	High Impact Plastic
Component Technology	
Range 1	0.5-30 minutes
Range 2	0.5-32 hours
On-Time	0.2-13 minutes
Vibration	5g's, 50 Hz
Standard	LED Indicator, Manual Run Button

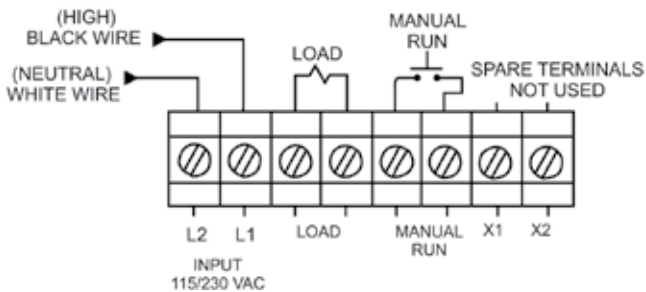
OPERATION

The Solid-State Timer operates on 115/230 VAC 50/60 hz input power. Output is also 115/230 VAC 50/60 Hz, which is directed to power the pump, or to trigger a solenoid that activates a pneumatic or hydraulic pump. User sets desired total cycle time and “on” time. The timer will provide output power for as long as the time set on for the “on” cycle. Manual run circuit resets timer to the beginning of a total cycle.

DIMENSIONS Inches/(mm)



WIRING DIAGRAM



NOTE: Two spare terminals x1 and x2 are provided for customer convenience. They are not connected on the board and can be used for any terminations or junctions.

ORDERING INFORMATION

Description	Part No.	Old Part No.
Solid-State Timer		163-400-000
Replacement Circuit Board		572-142-590

Purchase Replacements Logically: Input Fuse AGC 1/2 amp; Load Fuse ABC 3 amp, Fast-Blow

INSTALLATION

It's this simple. Disconnect & Lockout input and load power supplies.

Open the timer cover. Remove the timer circuit board. Install a 1/2-inch conduit connector in the hole at the bottom of the timer.

Connect load leads (3 amps max.) in load terminals and input power leads to input terminals, then connect remote manual run contacts (if desired).

Install the timer board and make the appropriate total cycle and "on" time settings. Then fasten the cover. Reconnect the power. A total cycle will begin with the "on" time period as previously set.

Note: The "total cycle time" must not be less than the "on time" or the timer will remain in the "on" condition continuously.

All written and visual data contained in this document are based on the latest product information available at the time of publication. Graco reserves the right to make changes at any time without notice.

Contact us today!

To receive product information or talk with a Graco representative, call 800-533-9655 or visit us online at www.graco.com.



©2006-2009 Graco Inc. Form No. L14521 Rev. B 2/09 Printed in U.S.A. All other brand names or marks are used for identification purposes and are trademarks of their respective owners. All written and visual data contained in this document are based on the latest product information available at the time of publication. Graco reserves the right to make changes at any time without notice.