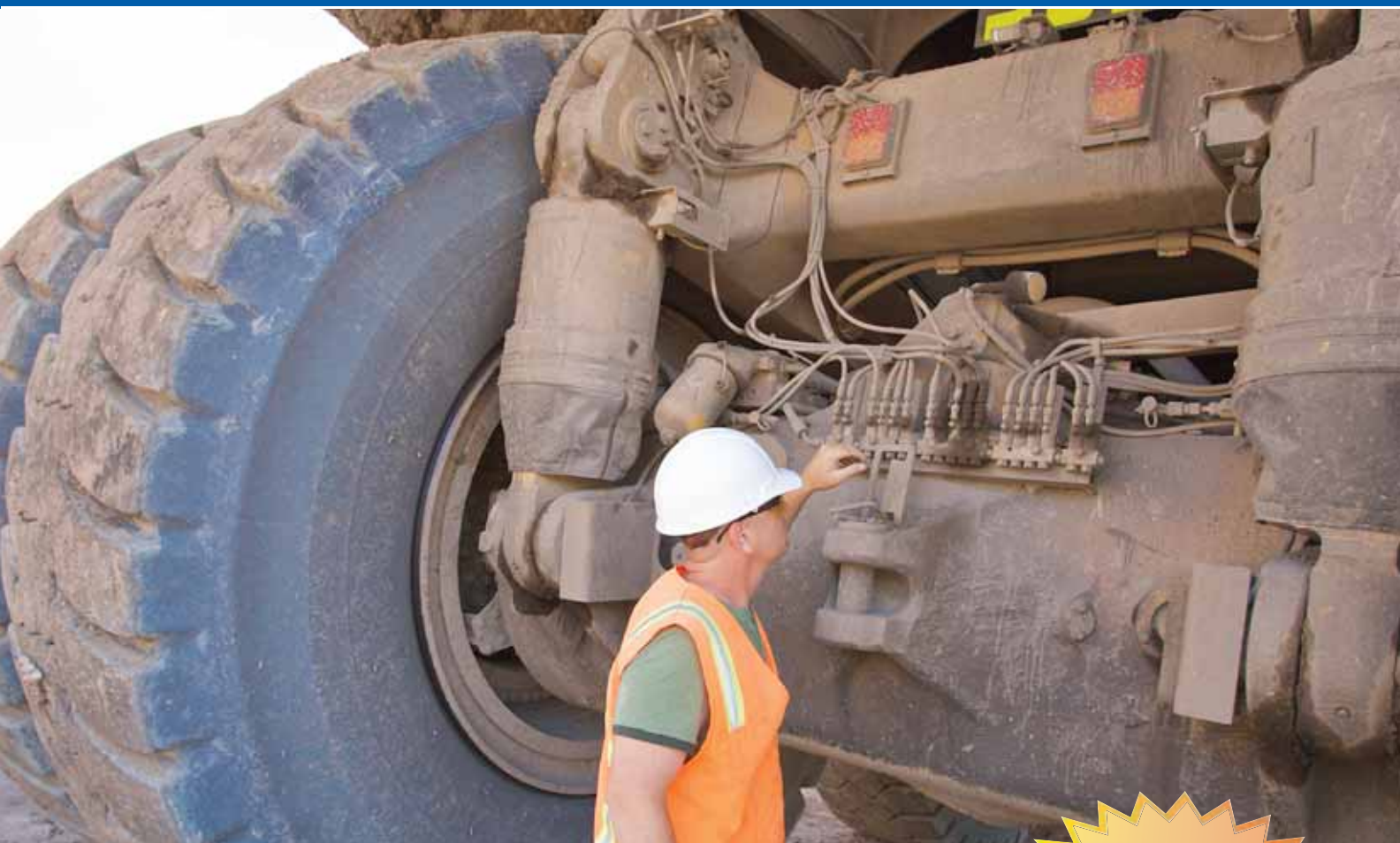




GL-1 Injector

Automatic Lubrication System

Available Electronically Only



Graco's captured seal design is the best in the business!

- Test results show the difference—GL-1 injectors showed no seal leakage at 215,000 cycles
- Seals last 5 times longer than the competition's!
- Combine with GL-11s and GL-32s in the same Single Line Parallel System for a full range of outputs

**Outperforms
the Competition**





Precision-honed Components for Reliable Operation in the Harshest Environments

System Setup Tips

- Run branches off main line and “Tee Out” to banks of injectors instead of in-series
- Locate injectors as close to bearings as possible to minimize line length to bearing to enable max pressure to reach injectors
- Place pressure switch beyond last injector
- Use large diameter tubing (1/4 in.) to lessen restrictions
- Make sure you have enough pressure to achieve normal 2,500 psi (172 bar)
- Make sure you vent down to the minimum reset pressure of your smallest injector

To adjust:

1. Loosen the lock nut
2. Rotate 5/8 inch output adjustment nut clockwise to decrease grease output—decrease the travel of the piston
3. Rotate 5/8 inch output adjustment nut counter-clockwise to increase grease output—increase the travel piston



Technical Specifications

Maximum operating pressure	3500 psi (241 bar)
Minimum operating pressure	1850 psi (128 bar)
Suggested operating pressure	2500 psi (172 bar)
Reset pressure	600 psi (4.1 bar)
Output volume per cycle	0.008–0.08 in ³ (0.13–1.13 c ³)
Recommended fluids	Uses NLGI #2 grease down to 32° F (0° C)
Instruction manual	308953
Design Guide	309
Zerk Fitting Outlet	1/8 in npt
Supply Line Outlet	1/4 in npt
Inlet	3/8 in npt

Adjustment Screw

Visual Indicator Pins

Lock Nut

Supply Line Outlet

Zerk Fitting with Cap

Mounting Holes

Same as the competition for an easy retrofit



Ordering Information

114901	One GL-1 Injector and Manifold
114902	Two GL-1 Injectors and Manifold
114903	Three GL-1 Injectors and Manifold
114904	Four GL-1 Injectors and Manifold
114905	Five GL-1 Injectors and Manifold
114909	Replacement GL-1 Injector

GL-1 Series Accessories

115120	GL-1 Injector Outlet Adapter Kit
115119	GL-1 Clear Plastisol Injector Cover
114916	GL-1 & GL-11 Zerk Fitting and Cap Kit

Contact us today!

To receive product information or talk with a Graco representative, call 800-533-9655 or visit us online at www.graco.com.